



APPROACH FROM RIJNKANNAAL

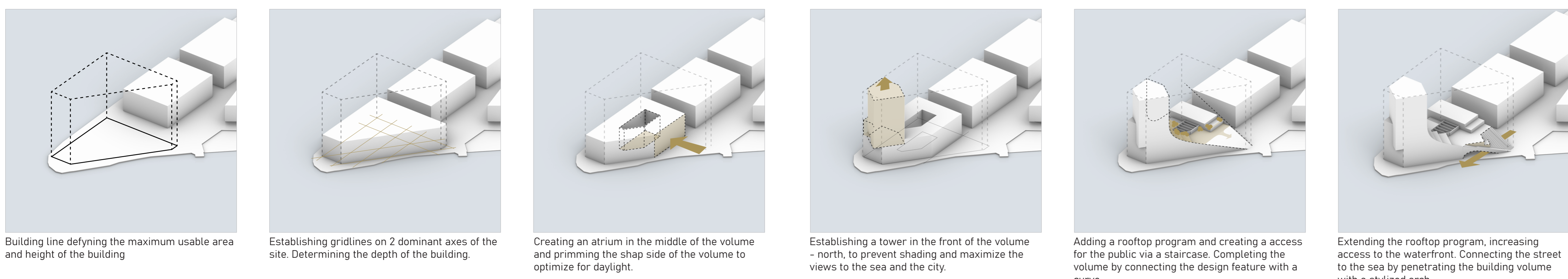
A notable challenge entailed integrating a tall structure into a neighborhood predominantly characterized by 6-7 story buildings. The solution involved a design featuring a steep curve, commencing from a 6-story base and gradually ascending to a 21-story tower.



CENTRAL ATRIUM

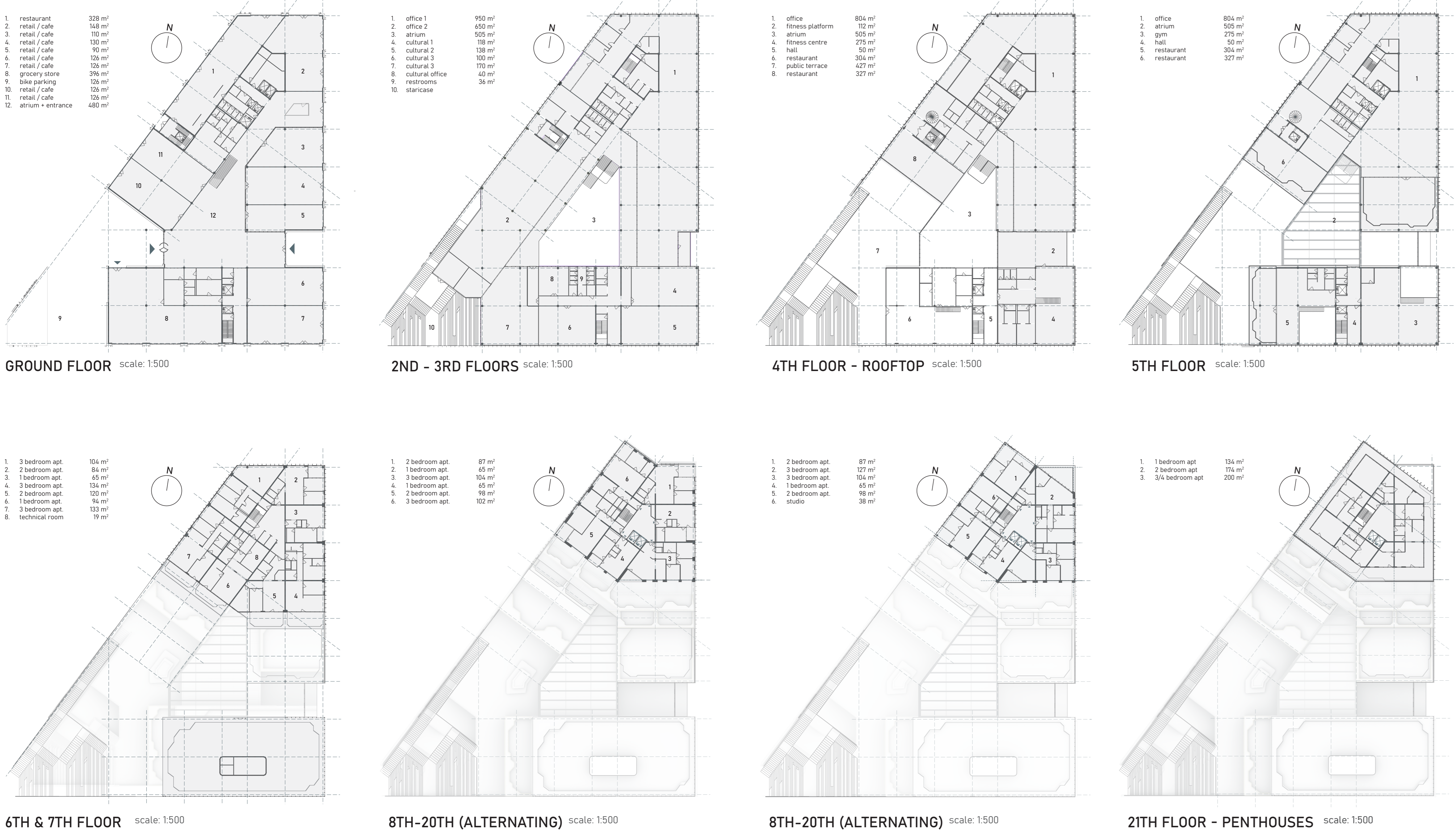
It incorporated a central atrium, serving as a nexus that seamlessly connects all distinct spaces, thereby fostering flexibility in rearranging the building program to align with current needs. The atrium not only facilitates a comfortable indoor environment but also optimizes natural light, ventilation, and energy efficiency through utilization of solar gains.

CONCEPT



Building line defining the maximum usable area and height of the building. Establishing guidelines on 2 dominant areas of the site. Determining the depth of the building. Creating an atrium in the middle of the volume and priming the sharp side of the volume to optimize for daylight. Establishing a tower in the front of the volume - north, to prevent shading and maximize the views to the sea and the city. Adding a rooftop program and creating an access for the public via a staircase. Completing the volume by connecting the design feature with a curve. Extending the rooftop program, increasing access to the waterfront. Connecting the street to the sea by penetrating the building volume with a stylized arch.

LAYOUTS



GROUND FLOOR scale: 1:500 2ND - 3RD FLOORS scale: 1:500 4TH FLOOR - ROOFTOP scale: 1:500 5TH FLOOR scale: 1:500 6TH & 7TH FLOOR scale: 1:500 8TH-20TH (ALTERNATING) scale: 1:500 8TH-20TH (ALTERNATING) scale: 1:500 21TH FLOOR - PENTHOUSES scale: 1:500

CRUQUIUS CAPE CENTER

MIXED-USE BUILDING

Bc. Tomáš Sepeší  
Atelier Achten\_Pavliček

The project site is located in Cruquius, Amsterdam. Cruquius is an urban district in east Amsterdam, transforming an industrial port island, into a mixed-use city district. This project aims to design a mixed-use building on a plot located at the cape of the island. The building should not only work as a singular unit but respond to the needs of its surroundings and contribute to a socially sustainable neighborhood.

My mission was to design a building that would respond to high housing demand, but also introduce a work and leisure program in a flexible fashion characteristic of hybrid buildings.

Several challenges presented themselves when engaging with the selected site. Specifically, its somewhat remote character, juxtaposed with its relative proximity to the city center, prompted inquiries regarding strategies for revitalizing the area and determining an appropriate program to implement.

I devised a comprehensive program encompassing various dining establishments, retail spaces, offices, cultural venues, as well as public and residential functions. Public functions are primarily concentrated in the plinth of the building and the southern volume, designed for operational independence while connected through a shared enclosed atrium. This layout ensures flexibility in program utilization, accommodating diverse functions over time.

The design's most notable feature is the distinctive shape, characterized by a curved form ascending from the ground to create a tower. This architectural element enhances the building's visual appeal while establishing a gentle transition between the public space and the structure. Facilitating this transition is a staircase walkway enabling individuals from the square to ascend to the roof terrace on the fourth floor. The design intent is to encourage social interaction among individuals working, residing, or utilizing public facilities within the building, as well as those casually passing by. This aligns with the hybrid design theory, wherein buildings are conceived not as isolated entities but as microcosms of urban functions integrated with the surrounding public space.



PUBLIC WALKWAY / STAIRCASE

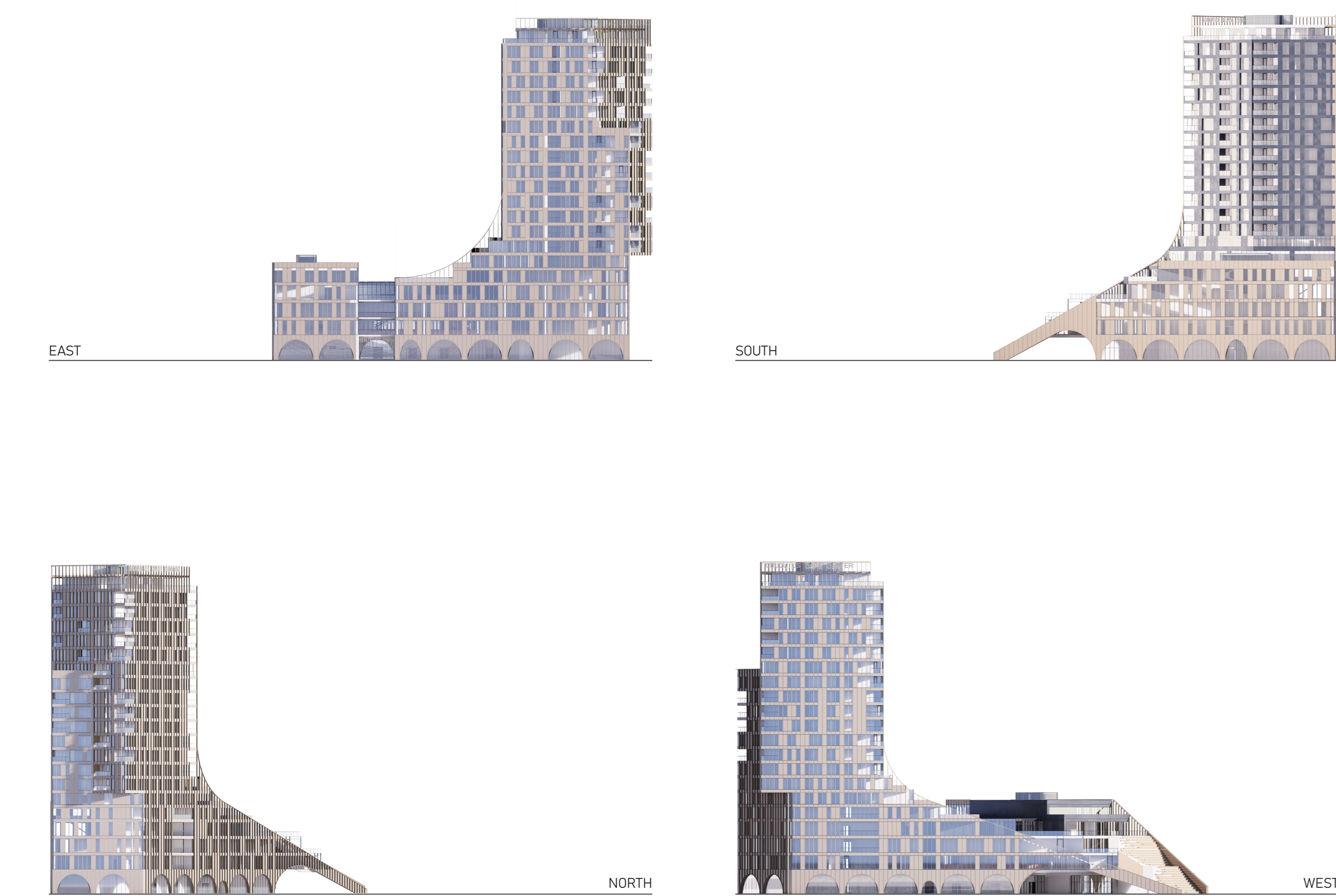
The staircase element extends the public realm onto the roof of the building, catering to both building occupants and individuals utilizing the adjacent public space. Situated atop the staircase are restaurants with outdoor seating, offering elevated views towards the west and the city center. Beneath the staircase, a substantial stylized arch not only frames the view from the street but also serves as a distinctive marker for the main entrance to the building situated beneath it.



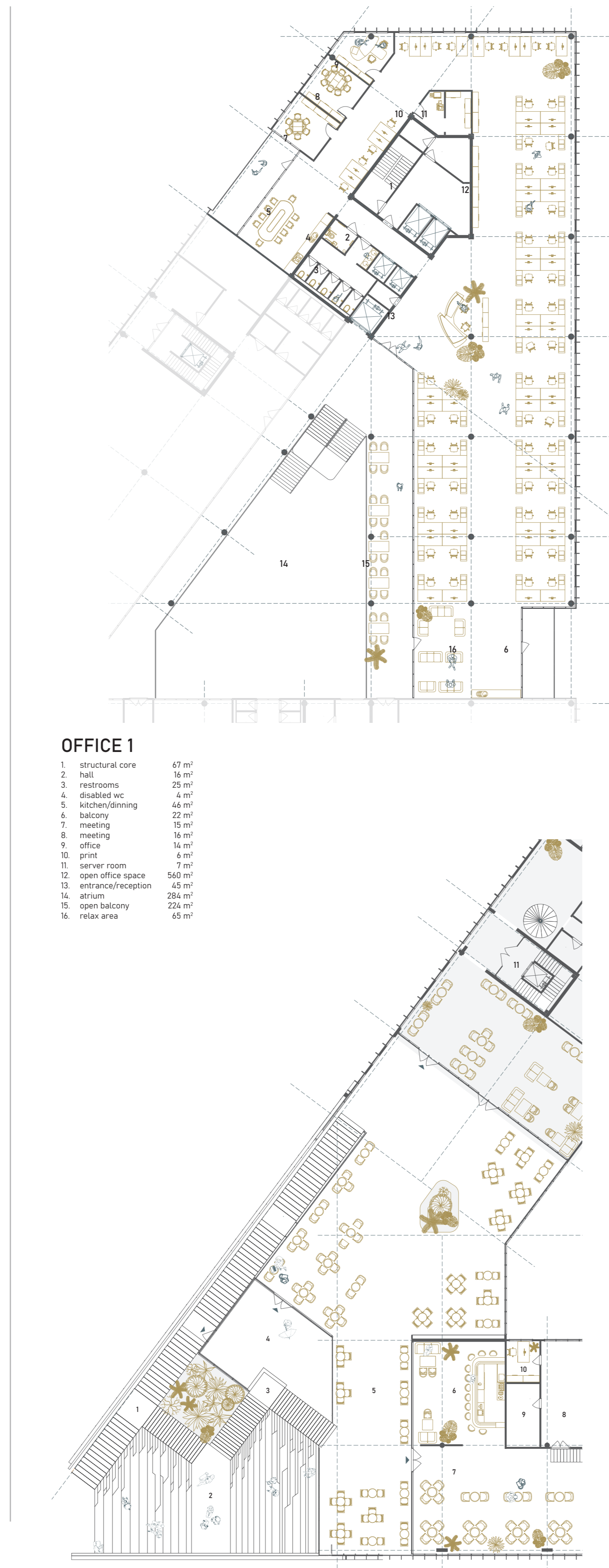
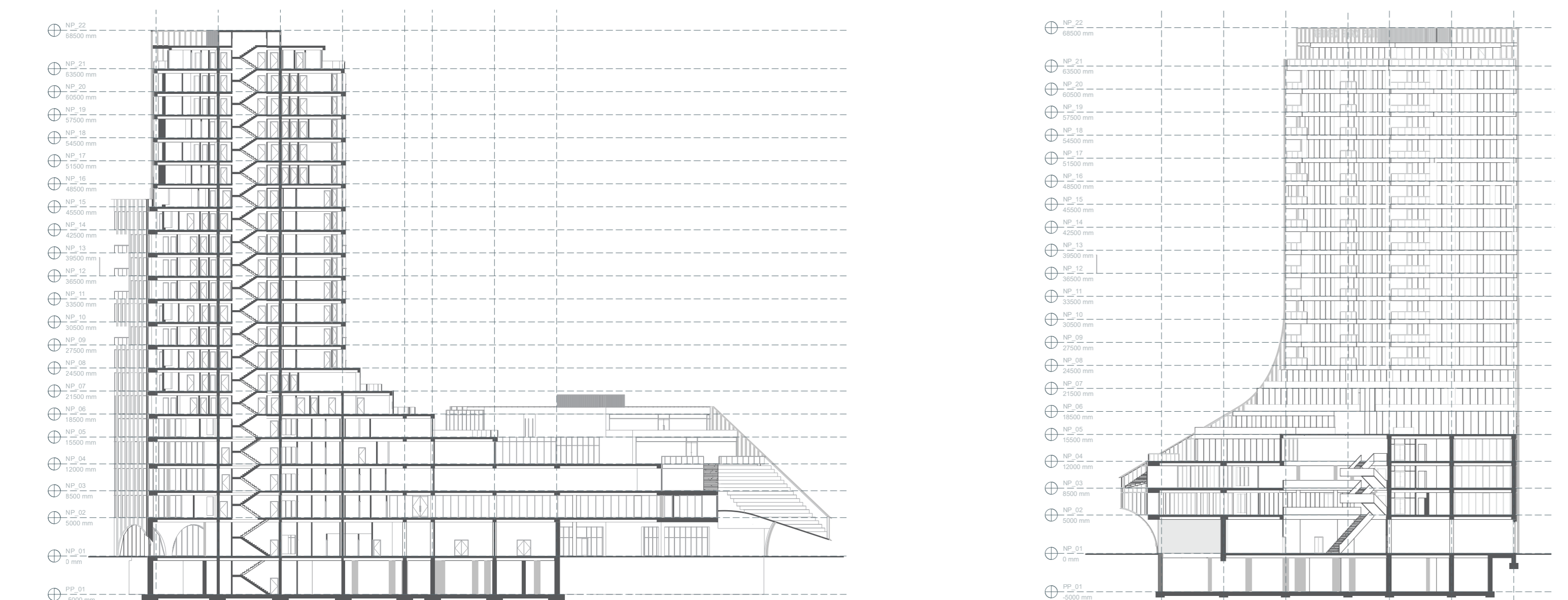
FRONTAL VIEW

The building ascends from the ground with a curved form, asserting its prominence above the waterfront and evoking the visual metaphor of a ship navigating through the sea. The façade articulates a dynamic interplay, featuring a combination of regular straight lamellas and gentle arches.

ELEVATIONS



SECTIONS



OFFICE 1

1. Reception area 87 m<sup>2</sup>  
2. Office 20 m<sup>2</sup>  
3. Meeting room 20 m<sup>2</sup>  
4. Conference room 40 m<sup>2</sup>  
5. Storage 22 m<sup>2</sup>  
6. Corridor 10 m<sup>2</sup>  
7. Restroom 10 m<sup>2</sup>  
8. Server room 10 m<sup>2</sup>  
9. Open office space 100 m<sup>2</sup>  
10. Break area 20 m<sup>2</sup>  
11. Terrace 10 m<sup>2</sup>

STAIRCASE WALKWAY

1. Staircase 25 m<sup>2</sup>  
2. Office 10 m<sup>2</sup>  
3. Office 10 m<sup>2</sup>  
4. Office 10 m<sup>2</sup>  
5. Office 10 m<sup>2</sup>  
6. Office 10 m<sup>2</sup>  
7. Office 10 m<sup>2</sup>  
8. Office 10 m<sup>2</sup>  
9. Office 10 m<sup>2</sup>  
10. Office 10 m<sup>2</sup>

