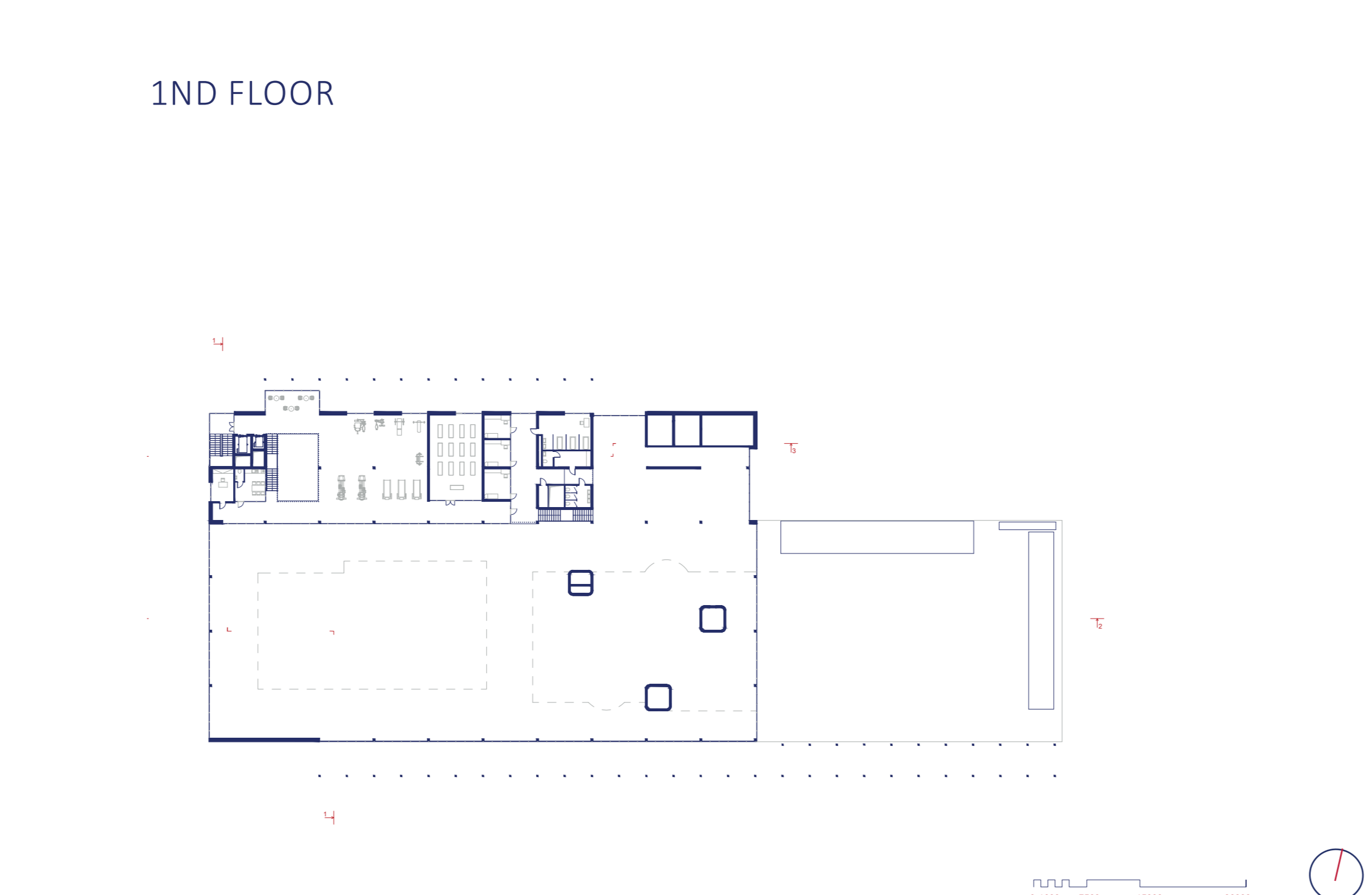
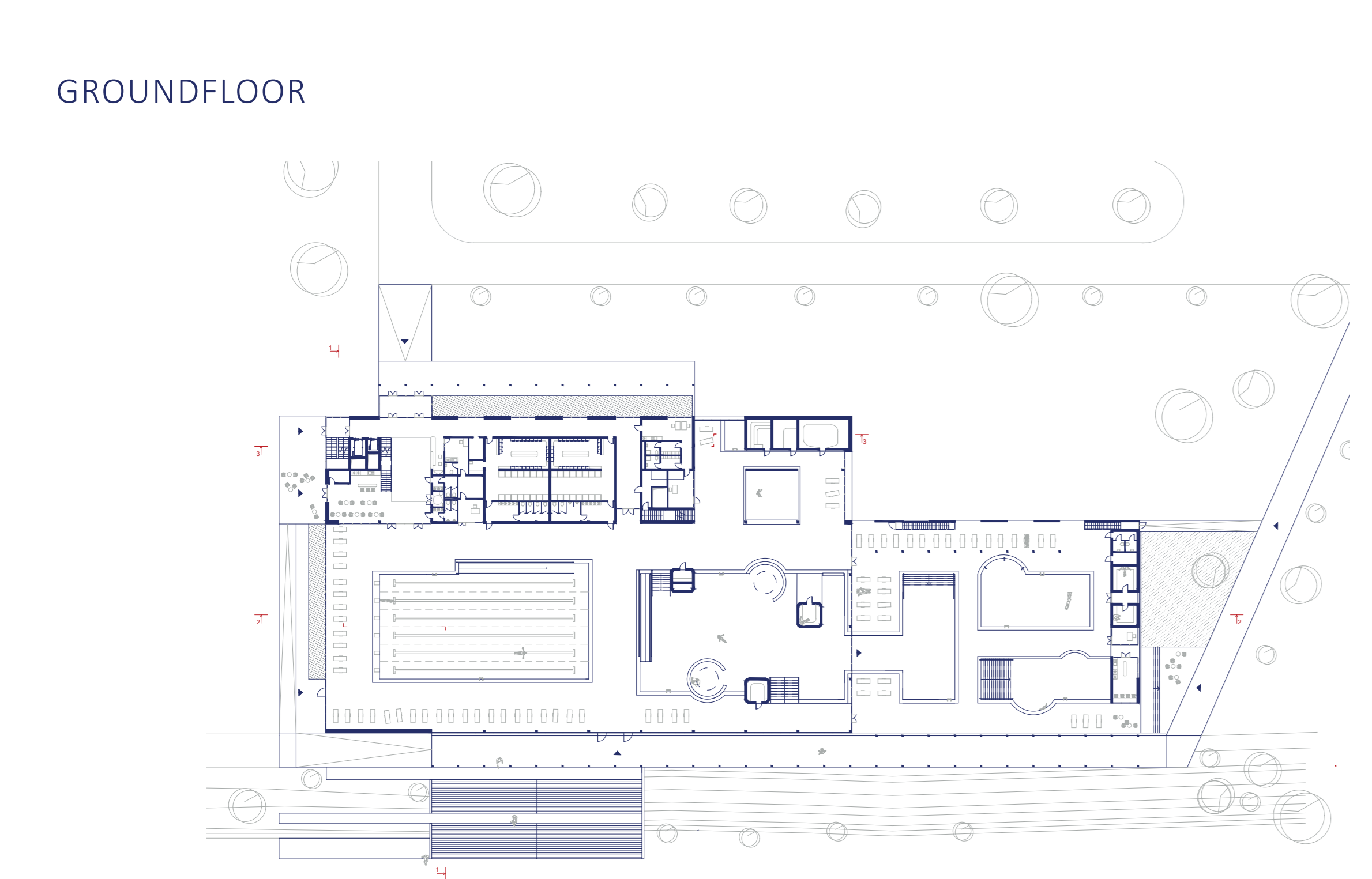
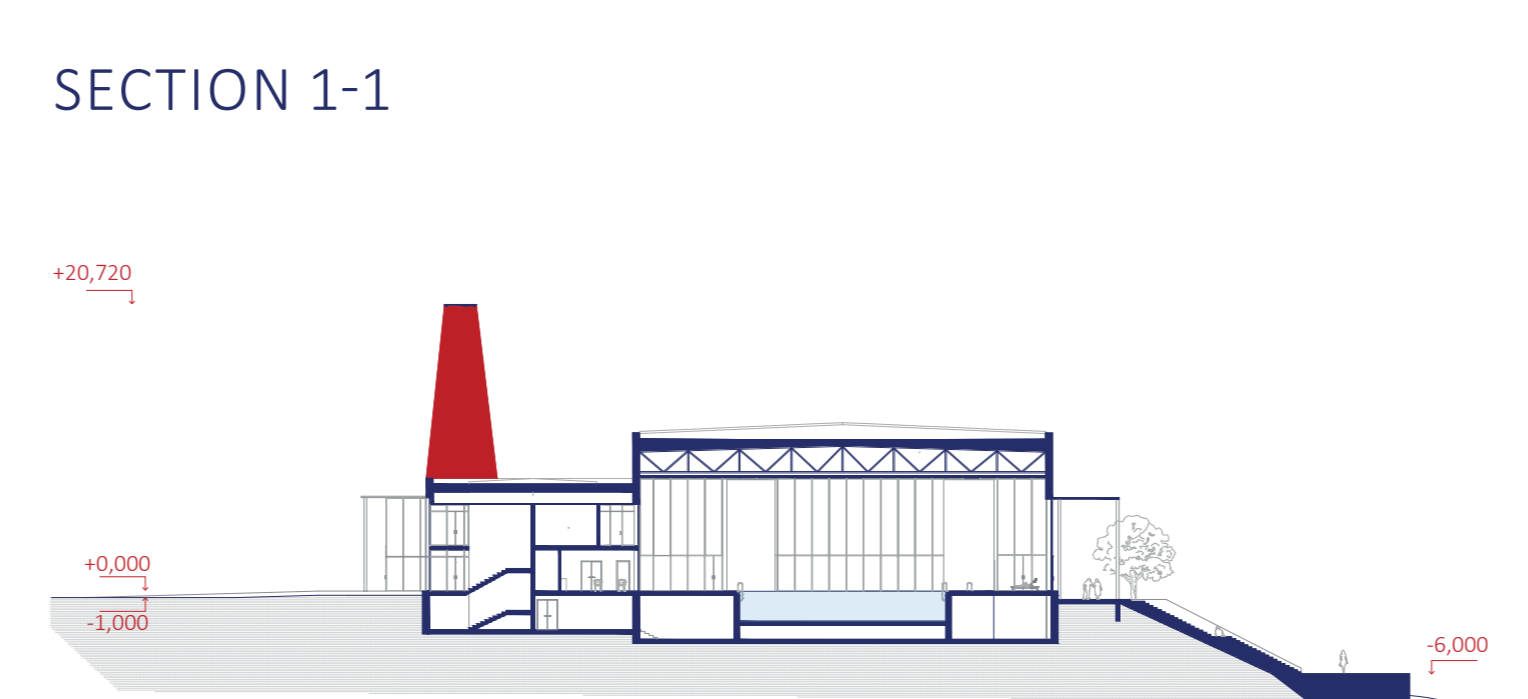
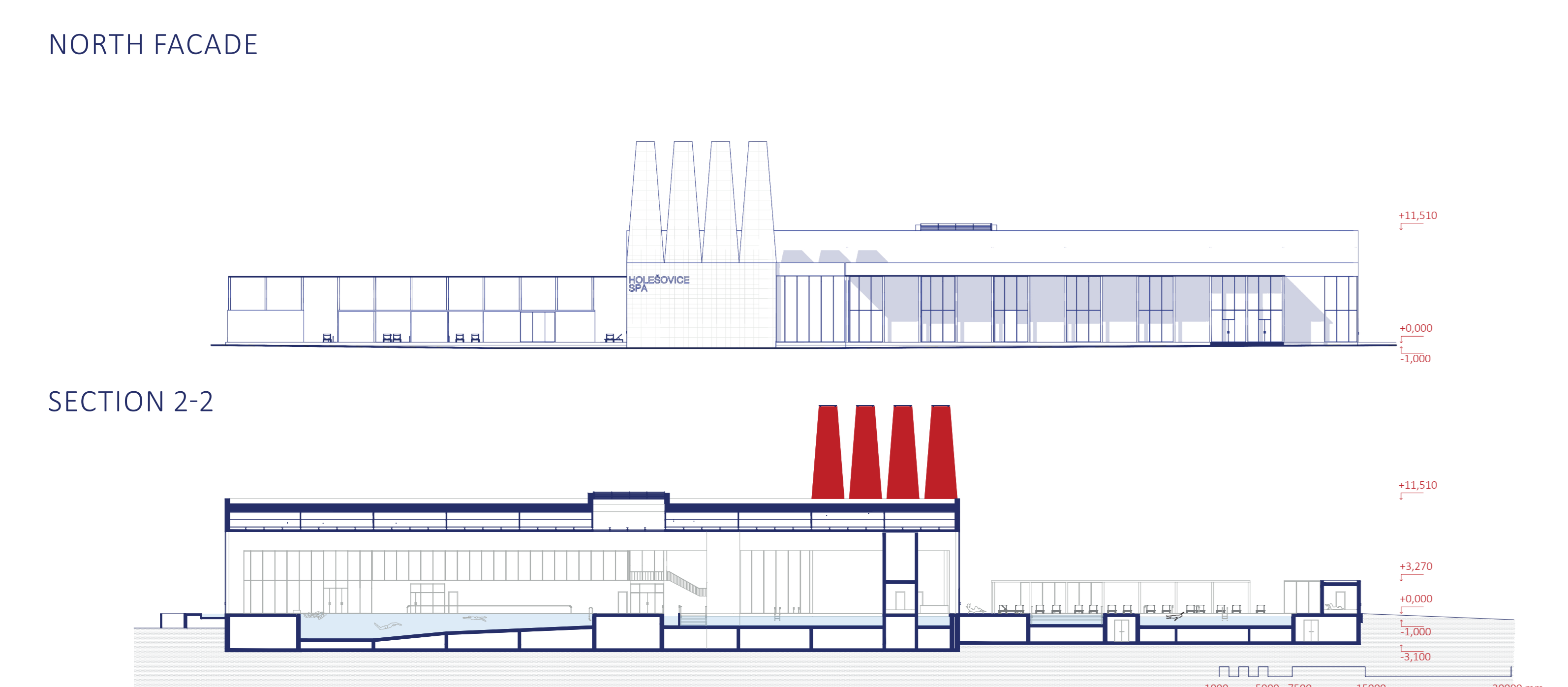
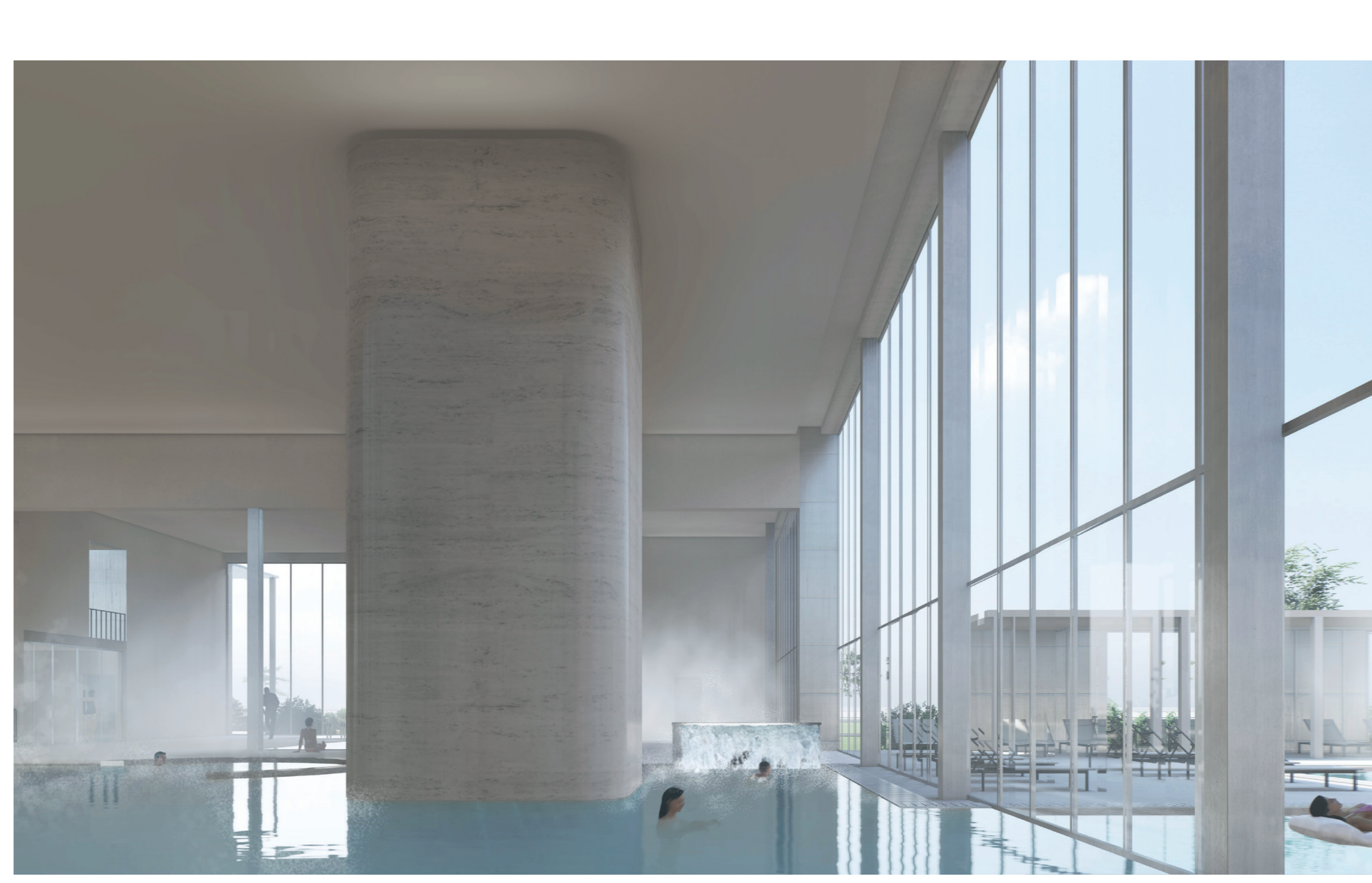
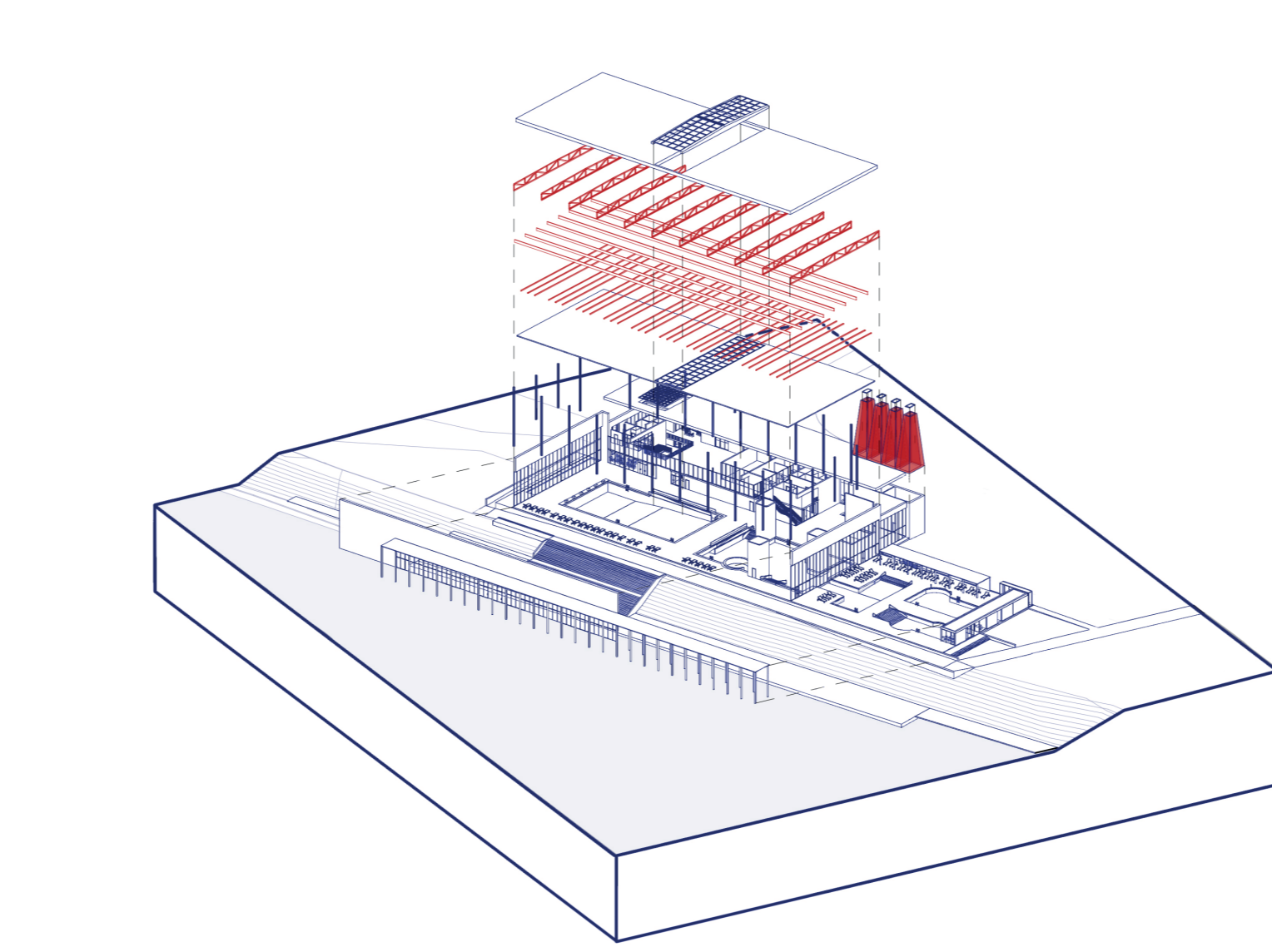
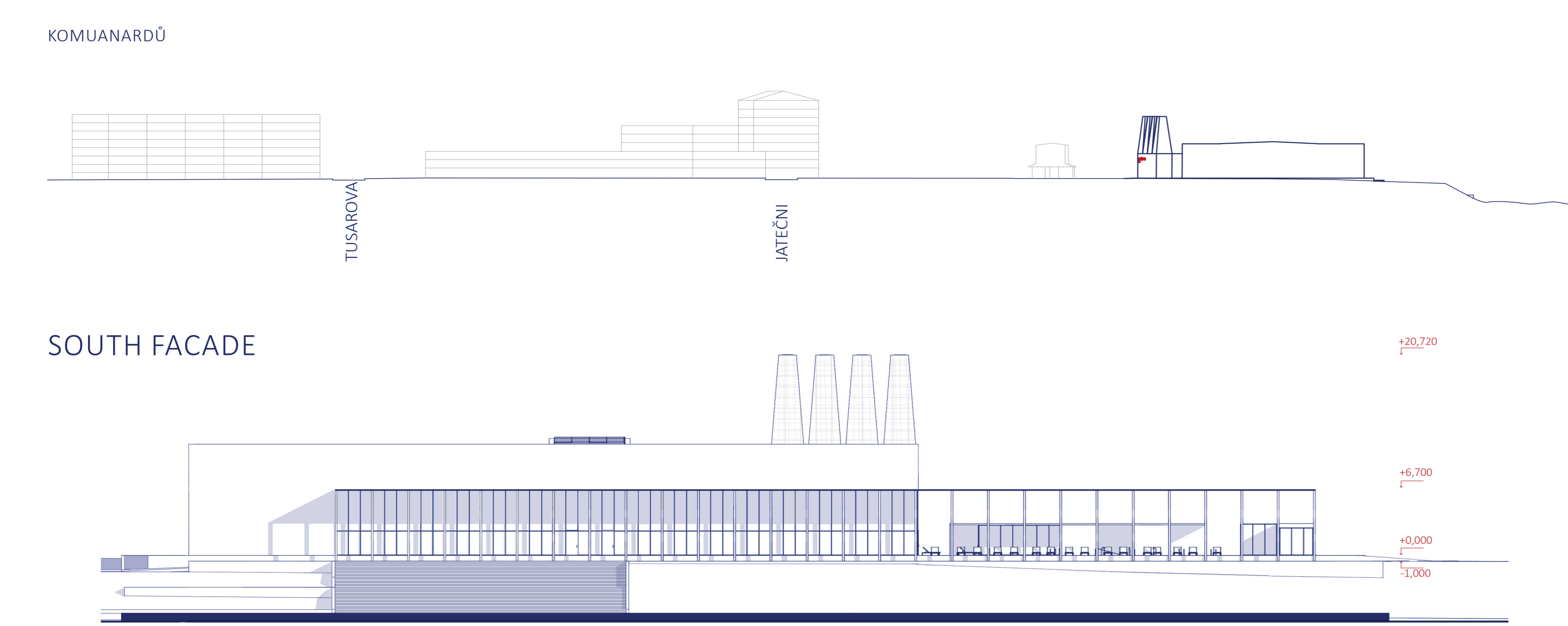
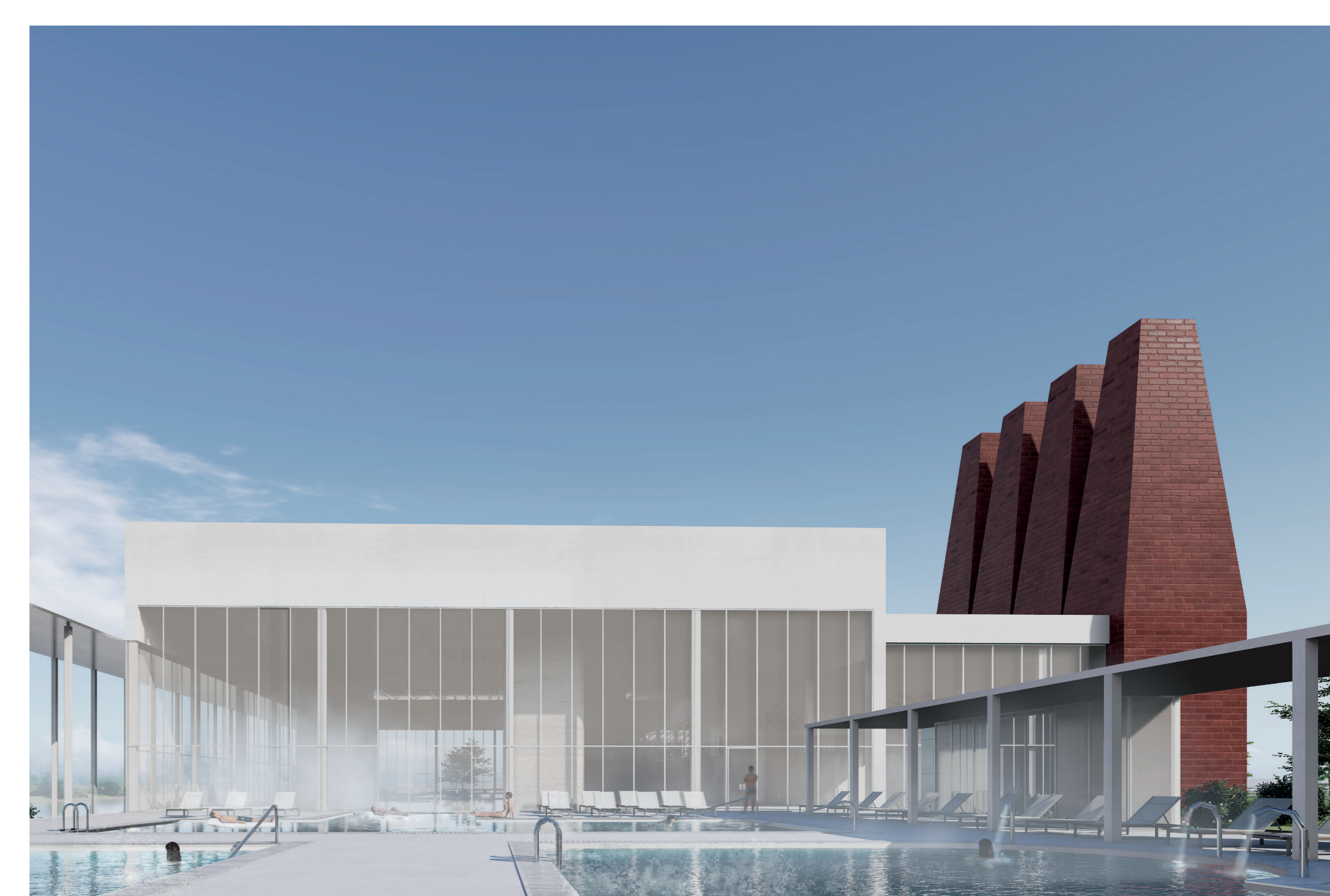
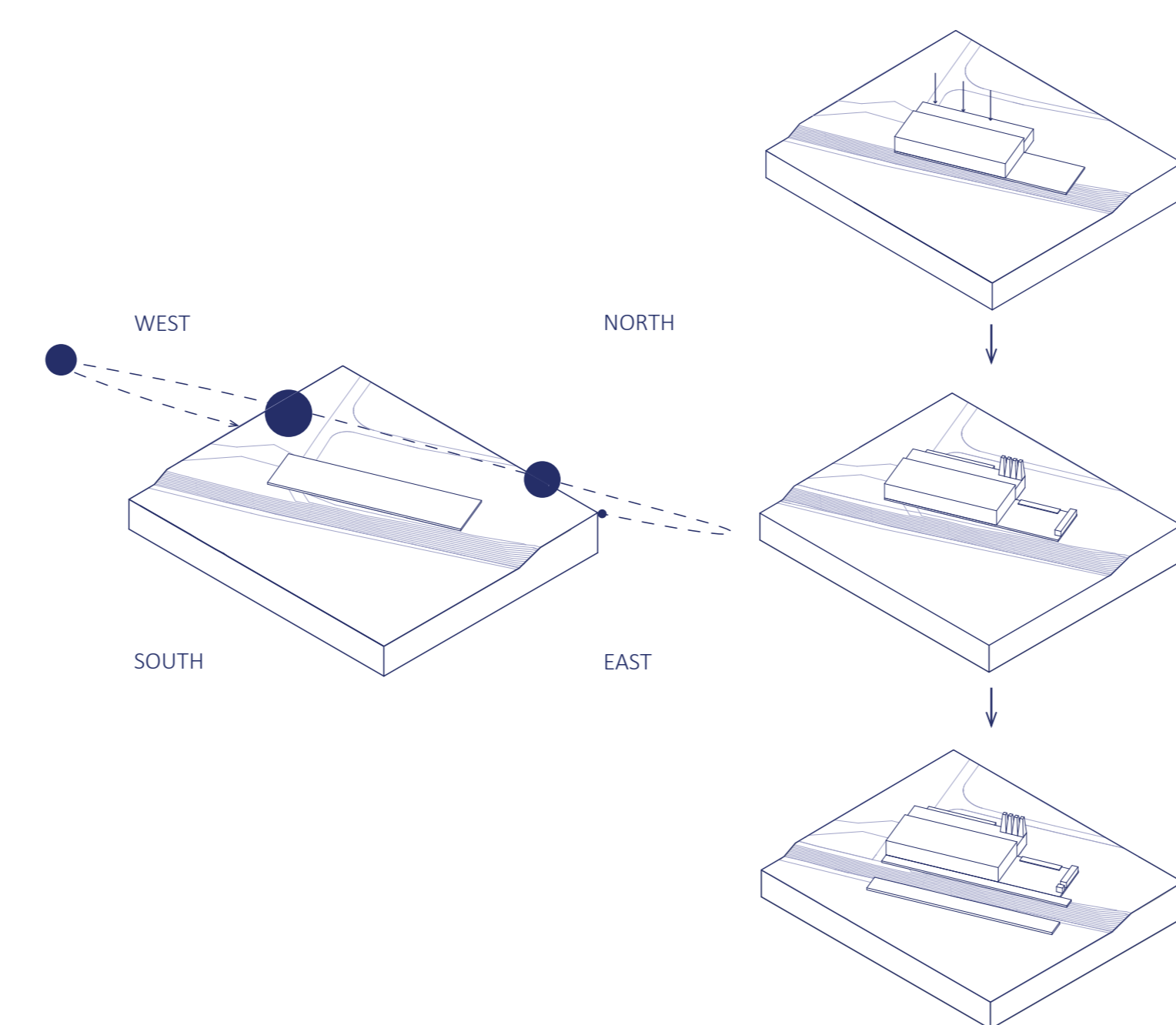
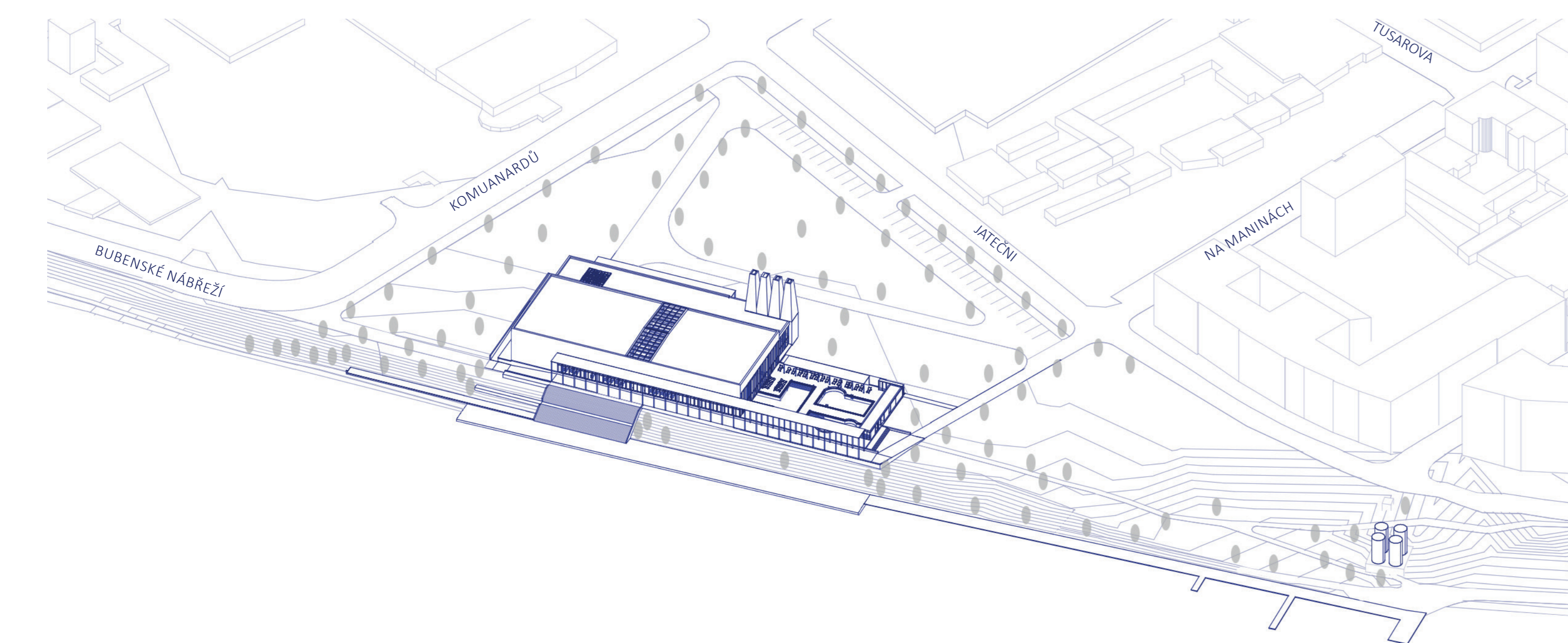
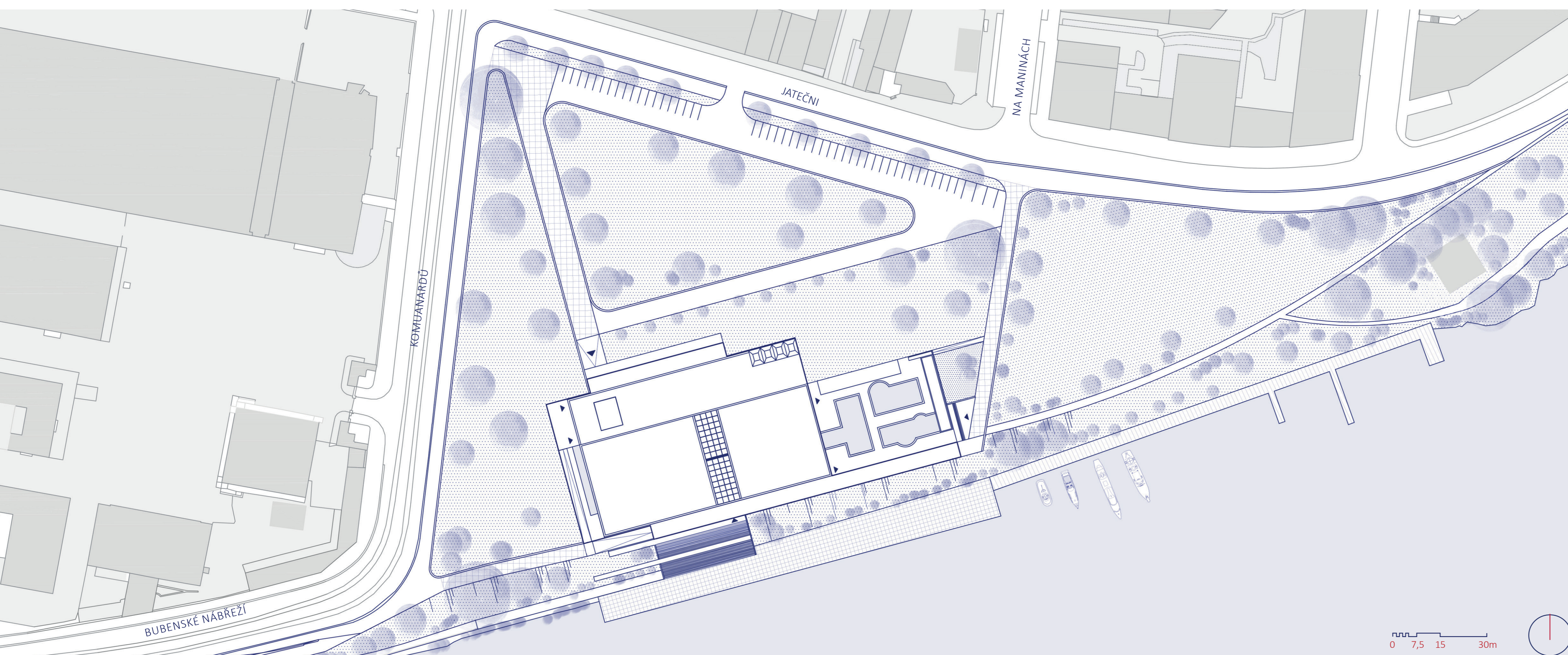




HOLEŠOVICE WELLNESS SPA CENTER



The project is situated in Holešovice, previously an industrial district of Prague that has witnessed a number of urban changes over the years. The spa is positioned near the historically significant marketplace, Holešovičká tržnice, along the

along the riverfront of the Vltava River, overlooking Karlín. The purpose of the diploma project is to integrate contemporary wellness treatments with the Czech spa traditions, that are deeply rooted into the country's history, contributing both the

both the city's identity and the well-being of residents and visitors of the city. In terms of urban structure, the project intends to use the site's potential and open the riverbank to public access without interfering general character of the site with its diverse industrial past.