



CHAPEL



AXO FROM NORTHWEST



CURRENT CONDITION

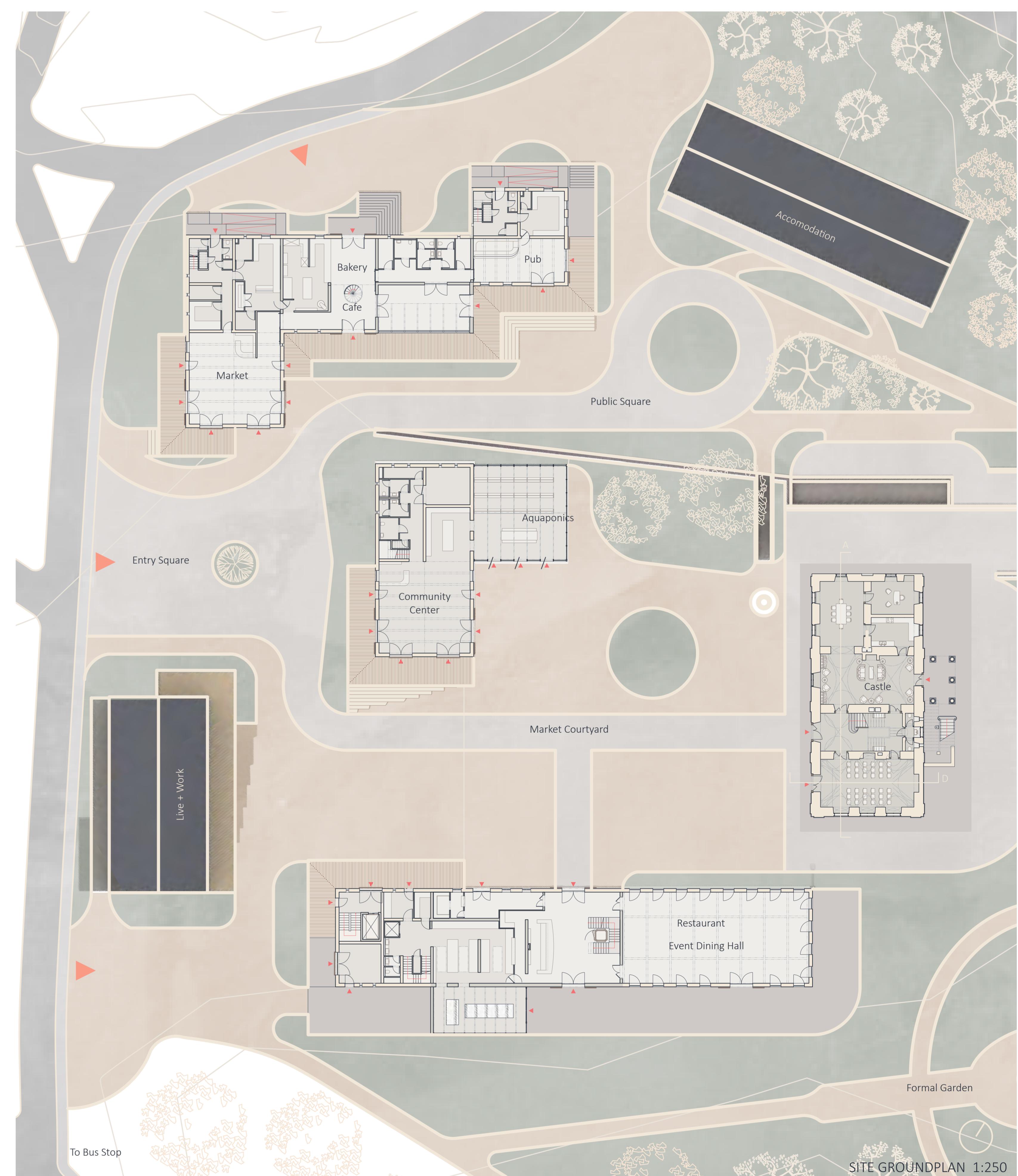
The subject of this project is the premises of Brnky castle and its former agricultural farm complex and grounds. The site is physically situated approximately 9 kilometers north from the center Prague.

The castle is the heart of the village of Brnky, which is part of the Zábřeh municipality. Long neglected, Brnky castle has been under monument protection since 1958. The structure has a complicated history which has contributed heavily to its current derelict state. All structures aside from the castle itself no longer stand. What remains are the scattered stones of their foundations.

The goal is reference the ghosts of these structures to create a multi-purpose site that engages with and meets the needs of present and future generations, revitalizing and regenerating what had once been considered the village center.

The castle site historically contained a farmyard, gardens, and orchards which will be reintroduced, with an emphasis on regenerative, biodynamic, symbiotic, and ecologically friendly practices. The proposed program for the conserved and reconstructed castle includes the preservation of the chapel which would be used as a wedding venue, events, and gallery space. The castle provides accommodation for these activities.

Castle site and new structure interventions will aim to maintain and reestablish the identity and historic value potential to the village of Brnky, while facilitating positive reengagement with the community and visitors/tourists of the area.



SITE GROUNDPLAN 1:250



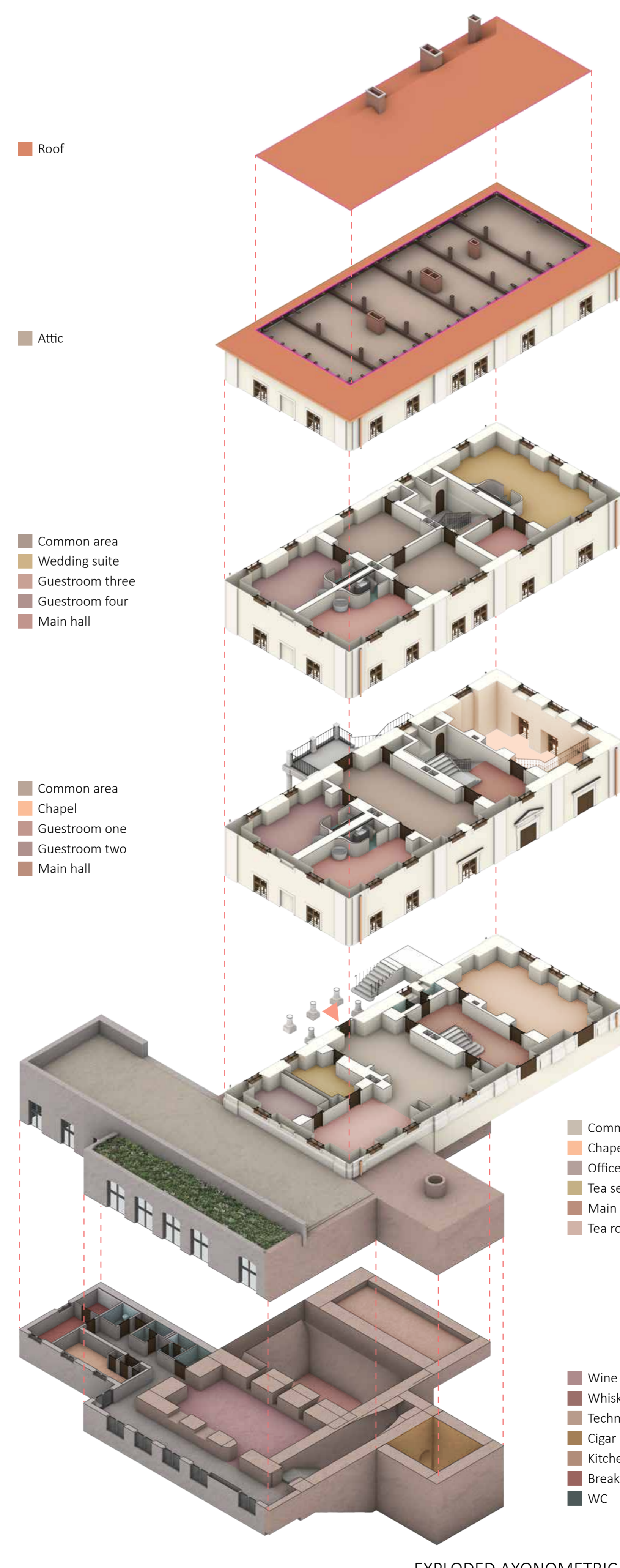
VIEW FROM STREET



BACK OF CASTLE



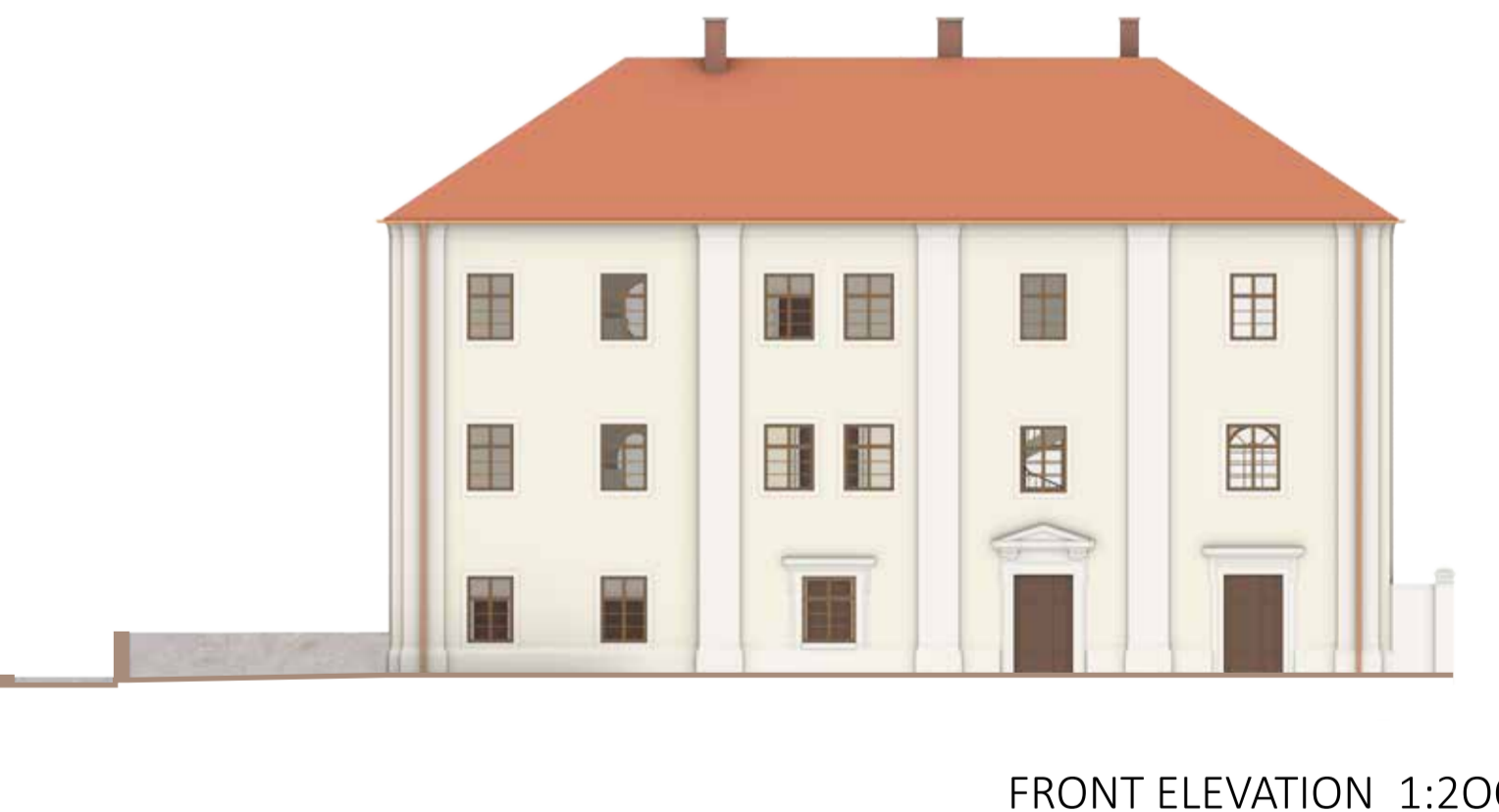
MULTI-PURPOSE STRUCTURE



EXPLODED AXONOMETRIC 1:200



RIGHT ELEVATION 1:200



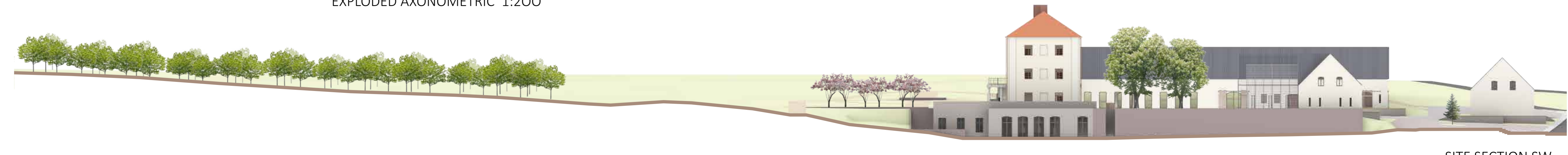
FRONT ELEVATION 1:200



SECTION D 1:200



SECTION A 1:200



SITE SECTION SW