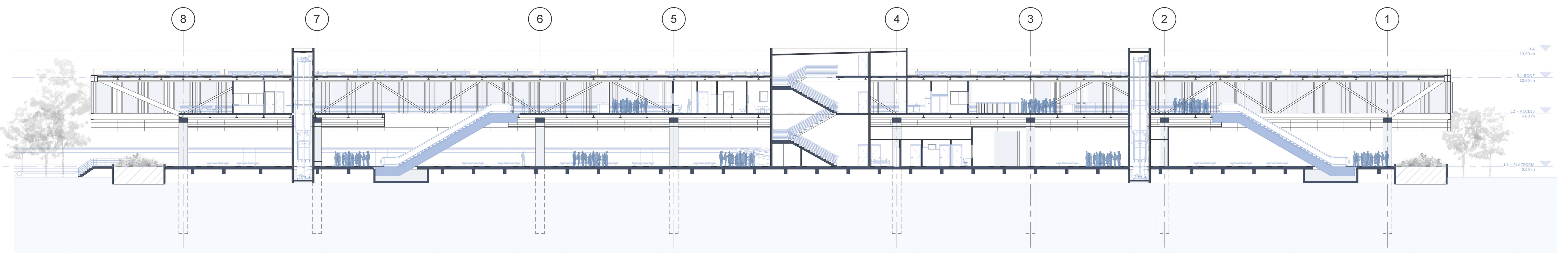


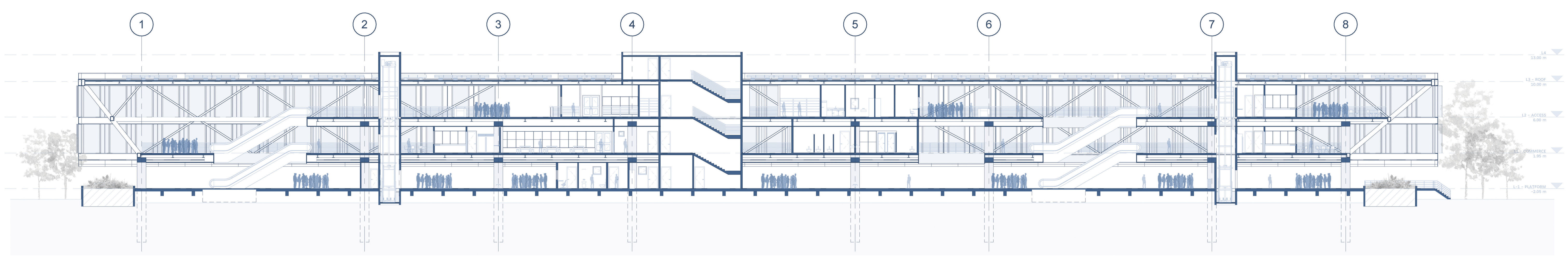
LEVEL 2 - ACCESS LEVEL



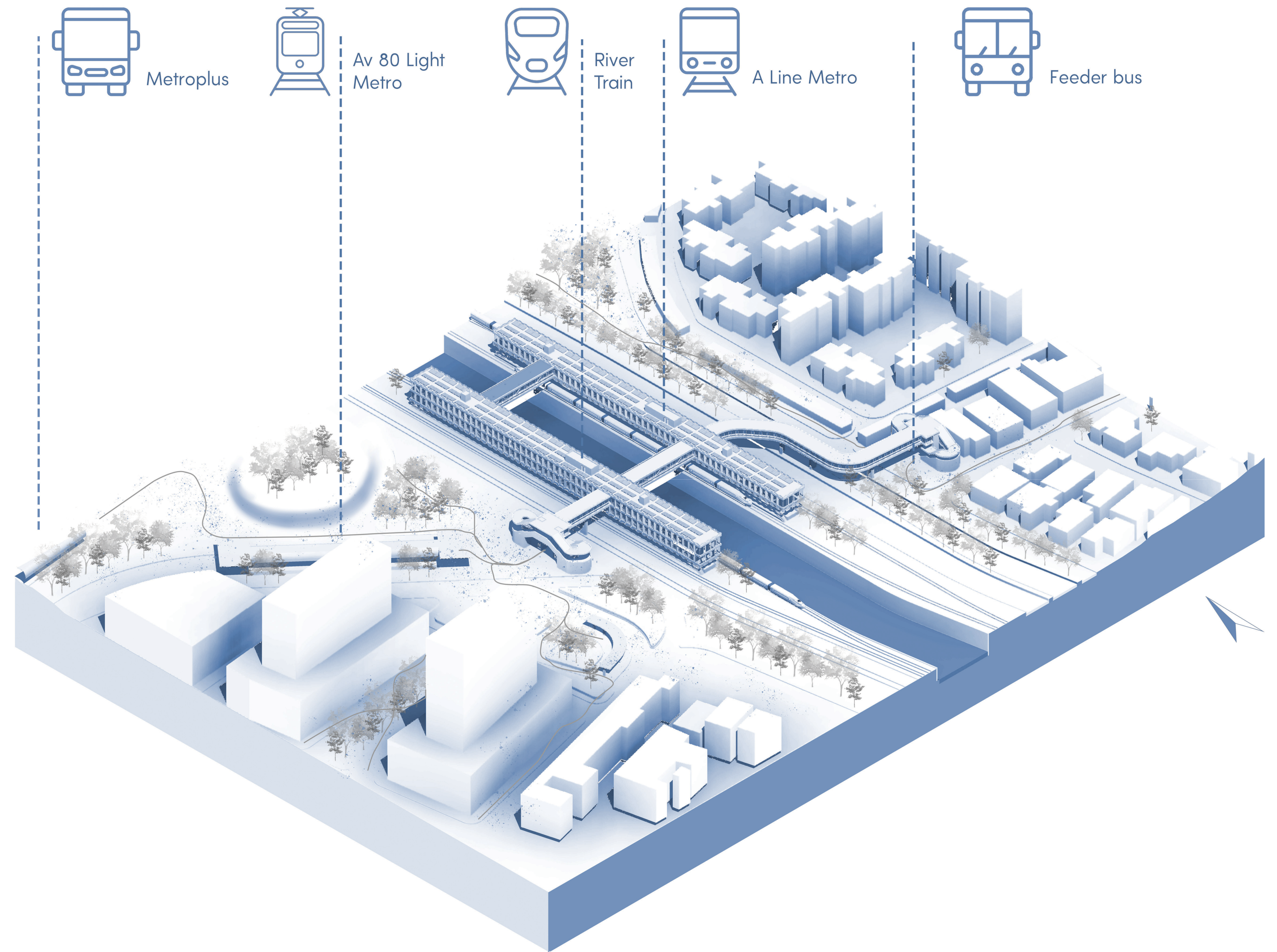
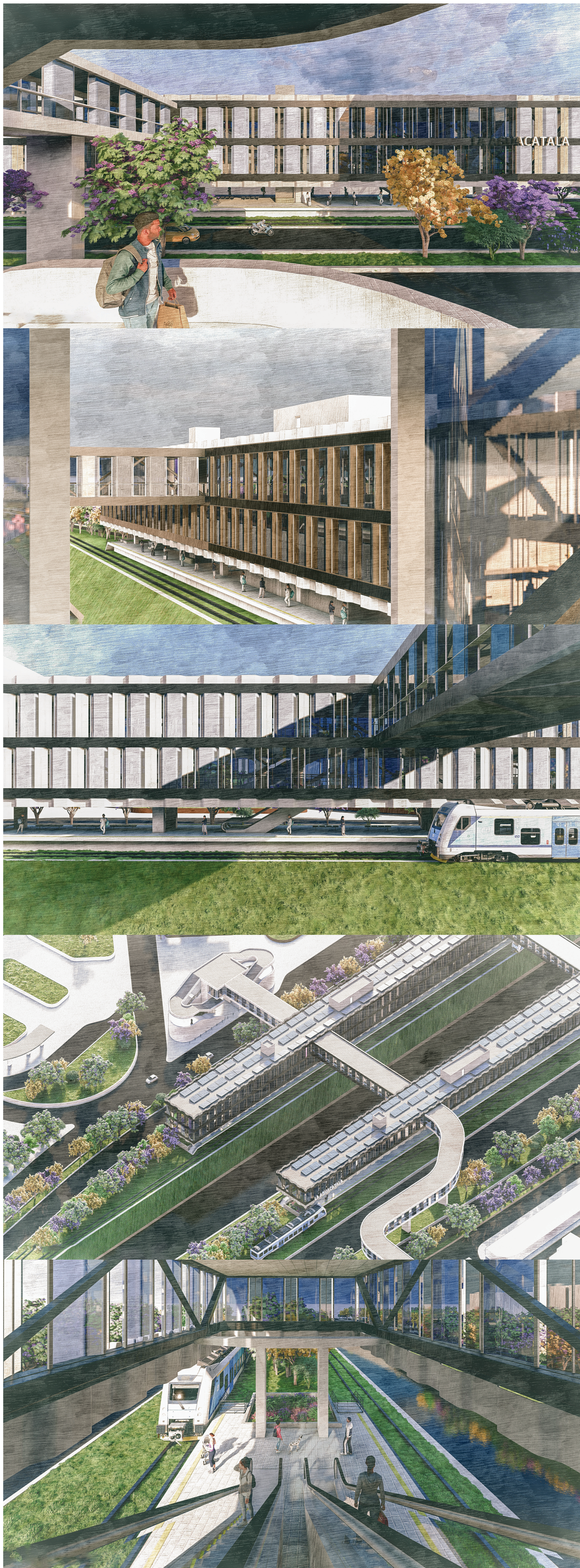
LEVEL 1 - TRAIN COMMERCE METRO PLATFORM



SECTION 1 METRO

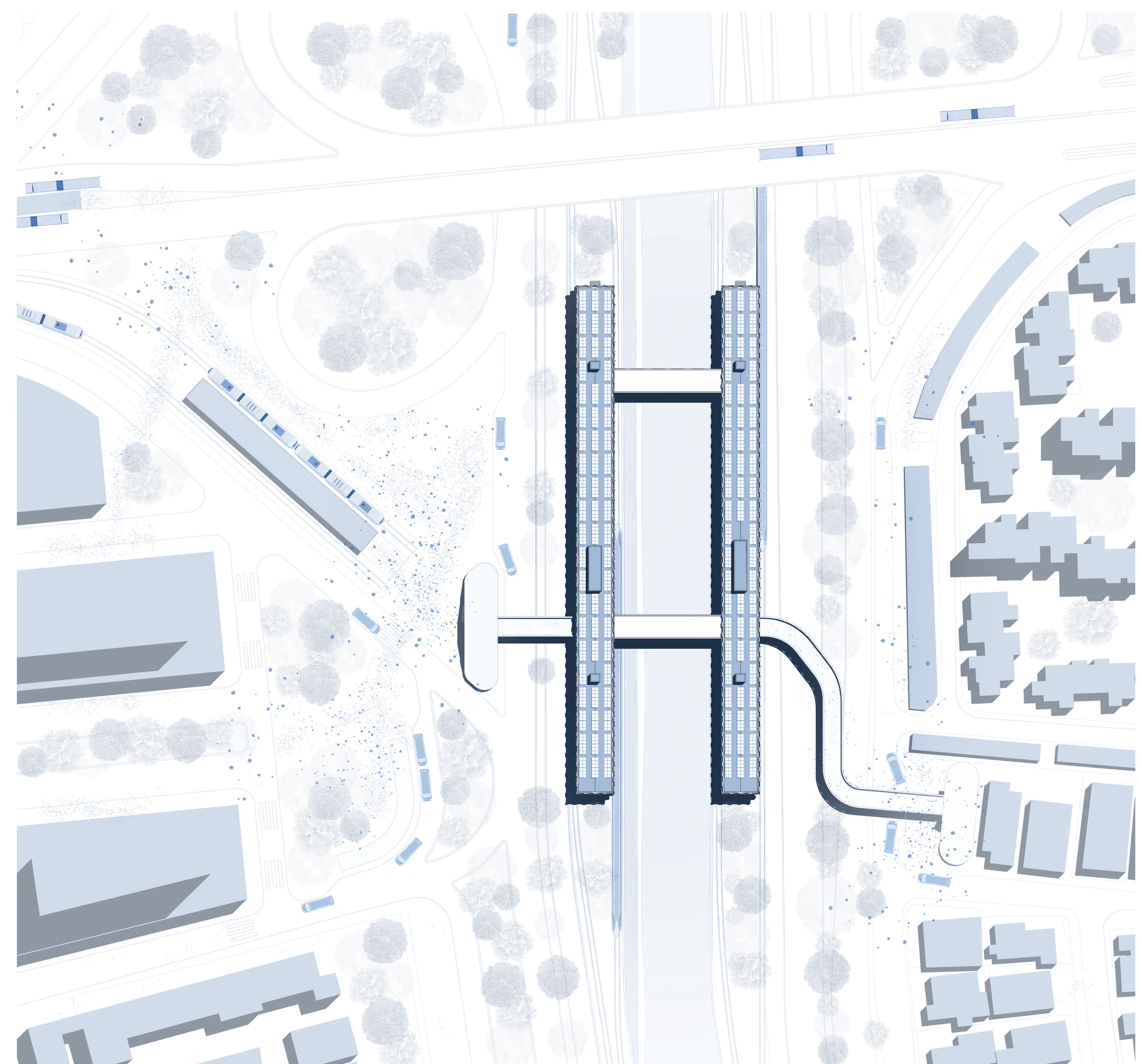


SECTION 2 RAIN



LA AGUACATALA - TRANSPORT HUB

CONNECTING A NUMBER OF MASS TRANSPORT SYSTEMS TOGETHER TO CREATE A GREATER URBAN NETWORK TO BENEFIT PASSENGERS & INHABITANTS

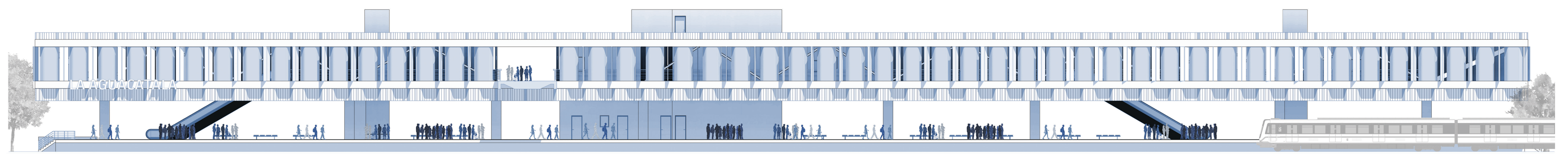


WHAT IS IT?

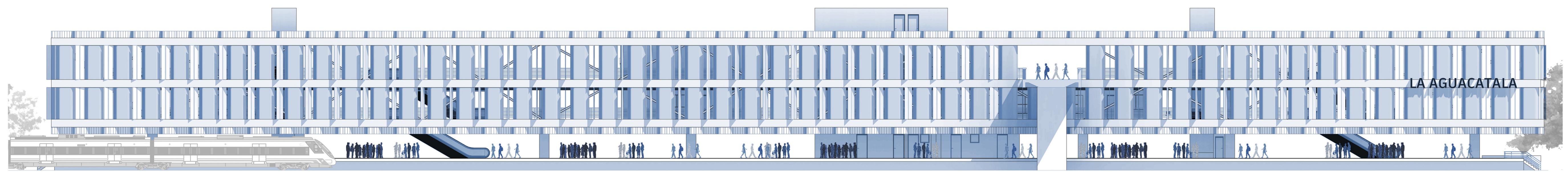
La Aguacatala is set to undergo major transformations with the addition of the river train and the 80th Avenue light rail. The relocation of FLA will pave the way for a mixed-use development strategy incorporating residential and commercial structures, as well as pedestrian-friendly city blocks. A transport HUB will be established to cater to both residents and visitors, enhancing the overall urban living experience. By integrating the river train and metro station into a unified structure on the west bank, passengers will benefit from direct transfers, waiting zones, dining options, and sustainable solar energy generation.

The establishment of a transport HUB will further elevate the area's appeal, offering convenience and accessibility to all who pass through. By seamlessly integrating different modes of transportation and amenities.

AGUACATALA TRANSPORT HUB SITE Medellín, Colombia.



FACADE METRO



FACADE TRAIN

